

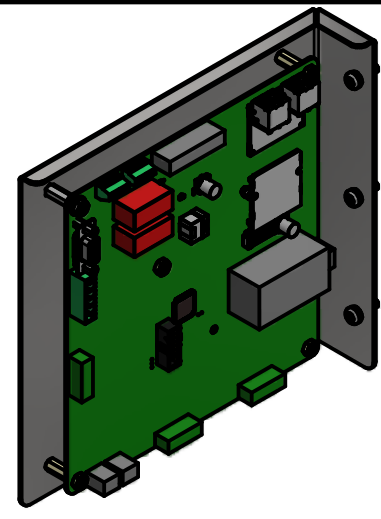
HGP Part Number	HorsePower (HP)	kVar	Harmonic	Voltage (V)	Hz.	Phase
HGP0050DW3----	50	11.3	5th	208	60	3

HGP Part Number	Schematic Drawing #	Approx Weight (LBS)
HGP0050DW3S0000	28697-208-2S	470
HGP0050DW3C0000	28697-208-2	475
HGP0050DW3C000H	28697-208-2H	480
HGP0050DW3S1000	29597-DWPQ1	473
HGP0050DW3C1000	29597-DWPQ	478
HGP0050DW3C100H	29597-DWPQH	482

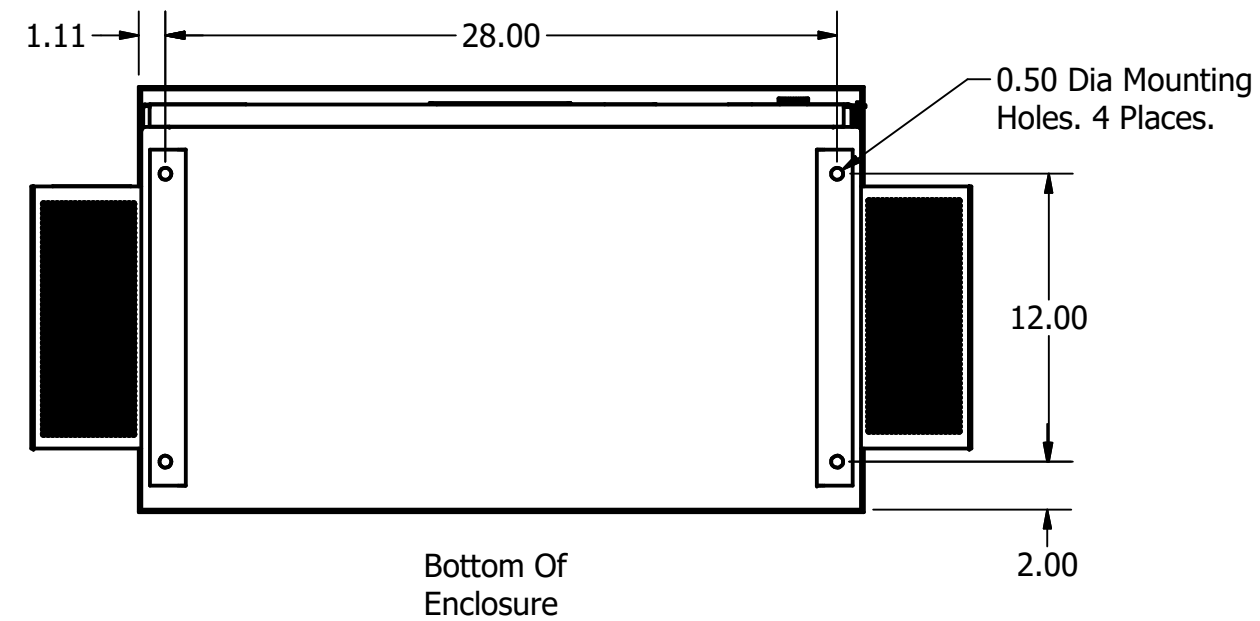
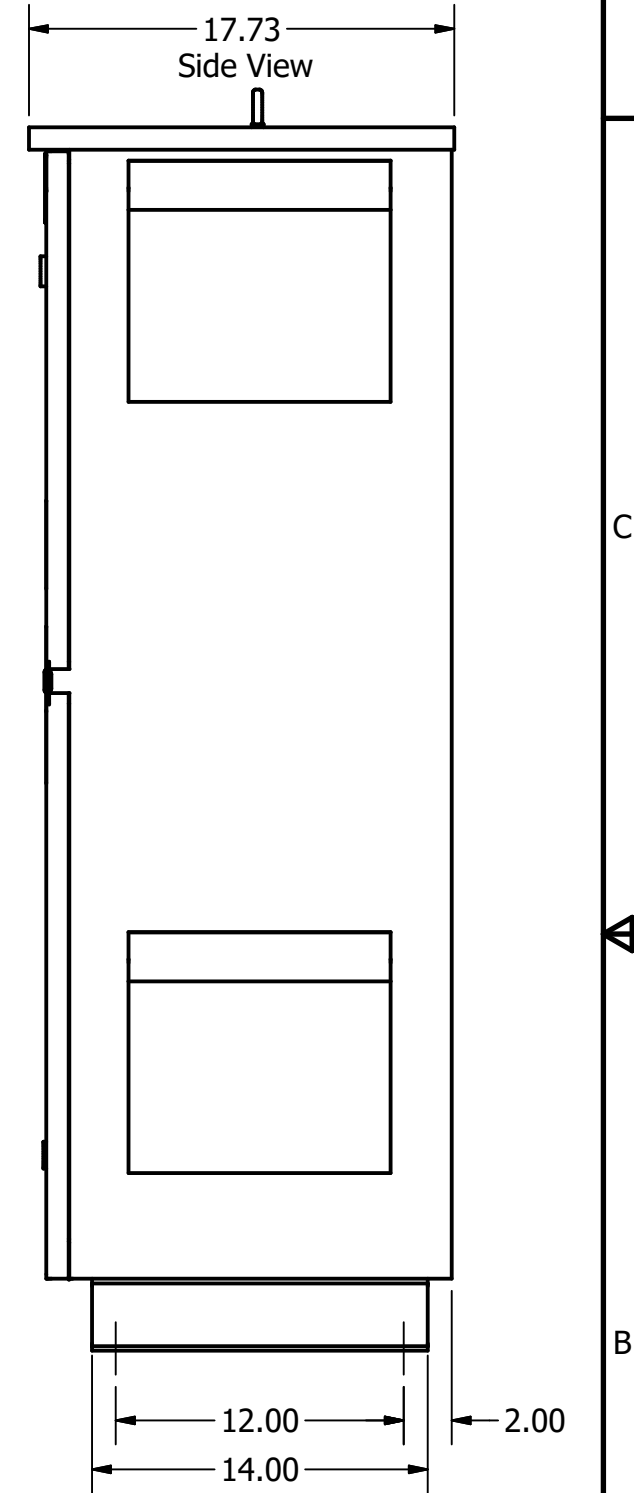
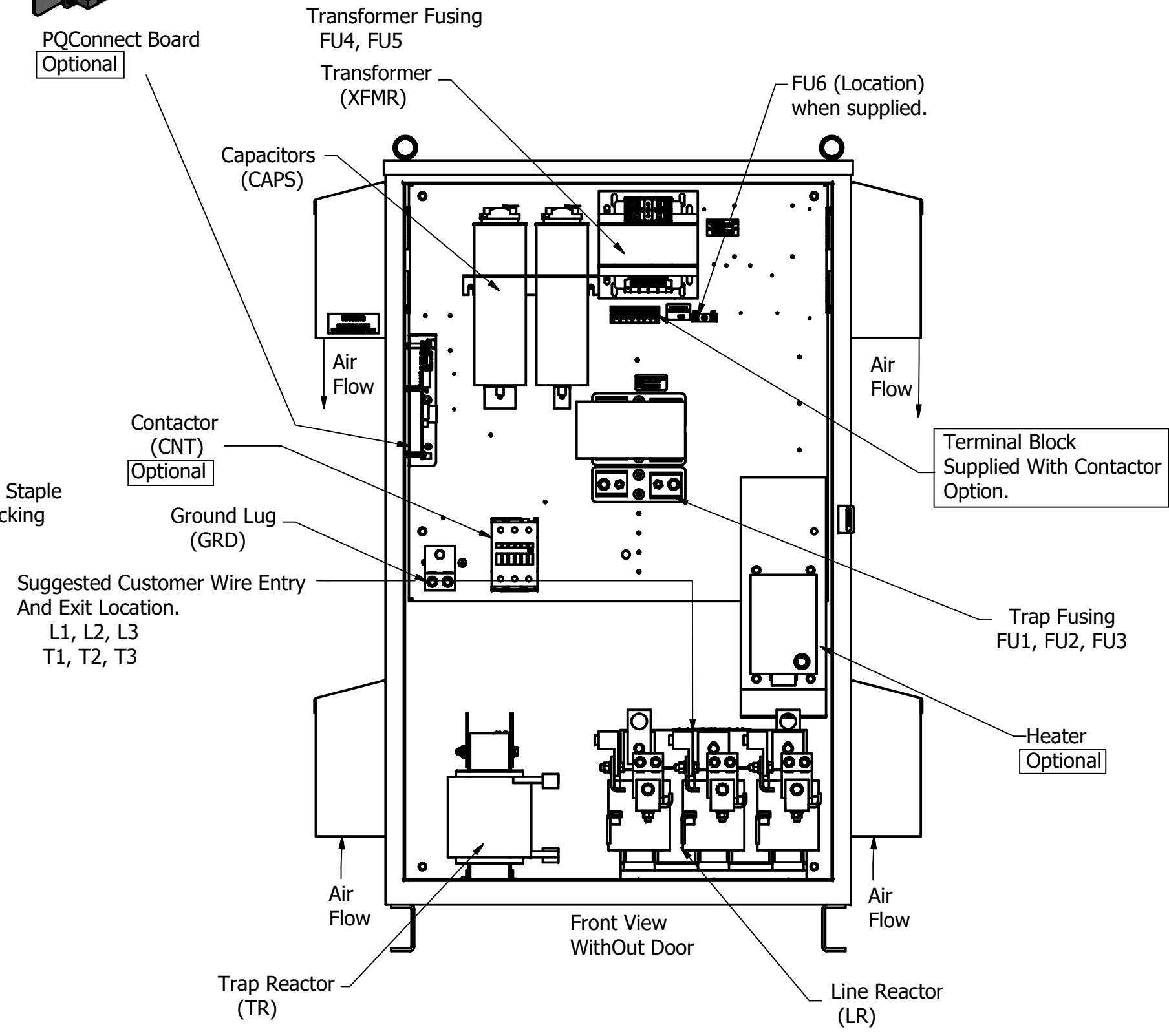
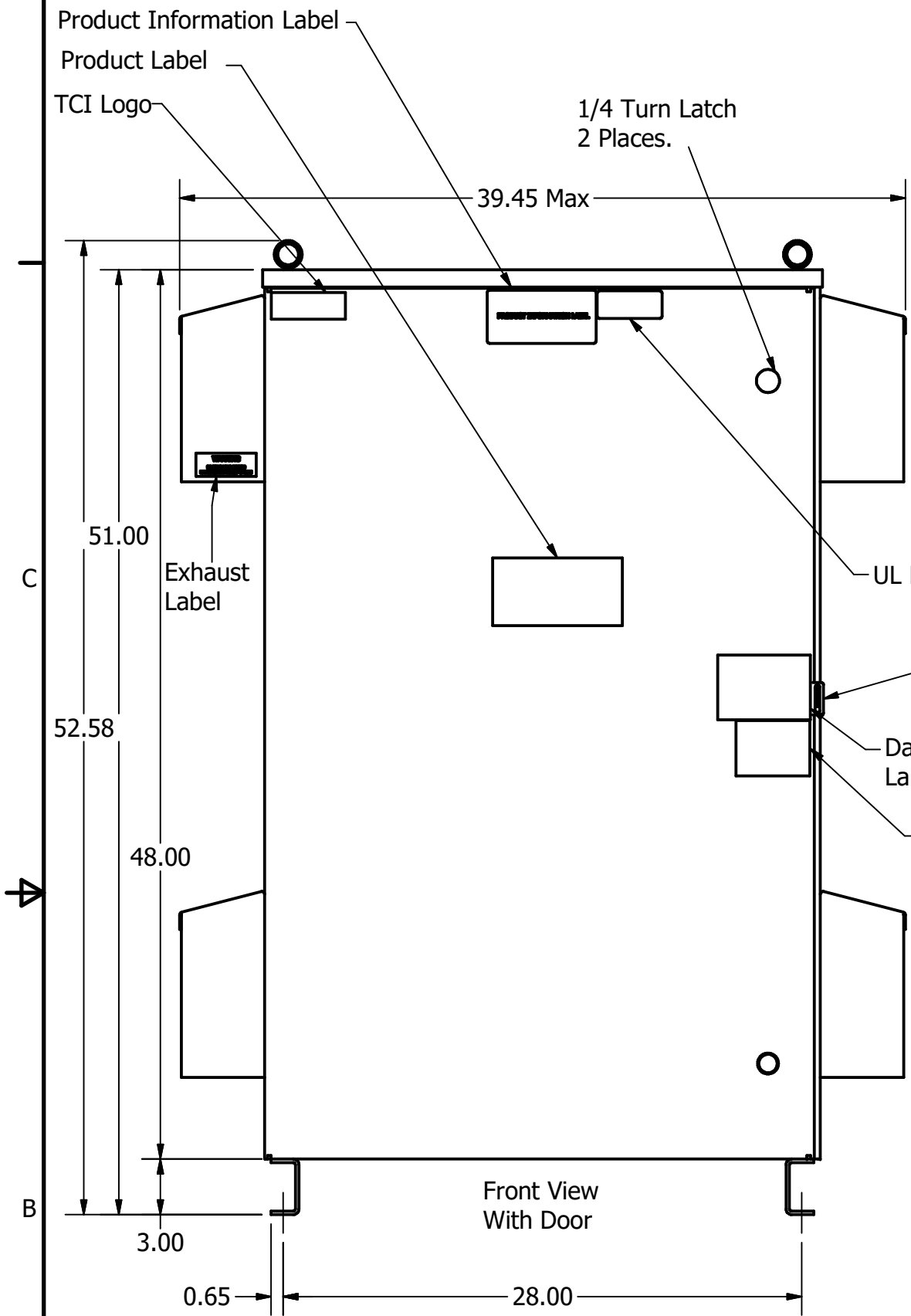
Note: For Torque Information
See IOM Manual

Customer Connections.
L1, L2, L3, T1, T2, T3
Wire Range: Two, 350MCM to 2AWG.

Ground Lug
Wire Range: Two, 350MCM to 2AWG.



PQConnect Board
Optional



HGP0500DW3----						
Components	S0000	C0000	C000H	S1000	C1000	C100H
Line Reactor (LR)	x	x	x	X	X	X
Trap Reactor (TR)	x	x	x	X	X	X
Capacitor (Cap)	x	x	x	X	X	X
Trap Fusing, FU1, FU2, FU3	x	x	x	X	X	X
Contactor (CNT)		x	x	X	X	X
Transformer (XFMR)	x	x	x	X	X	X
XFMR Fusing, FU4, FU5	x	x	x	X	X	X
FU6						X
Heater			x			X
PQConnect Board				X	X	X

Customer Is Responsible For Installation to
Meet All National And Local Electrical Codes.

NOTE: USE ONLY HUBS OR FITTINGS THAT COMPLY
WITH UL514B FOR TYPE 3R ENCLOSURES

Material(s) Shall be RoHS Compliant

TCI, LLC CLAIMS PROPRIETARY RIGHTS IN THE MATERIAL HEREIN DISCLOSED. IT IS SUPPLIED WITHOUT PREJUDICE TO ANY PATENT RIGHTS OF TCI AND MAY NOT BE REPRODUCED OR USED TO MANUFACTURE ANYTHING SHOWN THEREIN WITHOUT WRITTEN PERMISSION FROM TCI.

TOLERANCES (EXCEPT AS NOTED)			
DECIMAL			
.XX ± .25			
.XXX ± .10			
FRACTIONAL			
± 1/16			
ANGULAR			
± 1°			

TCI W132 N10611 Grant Drive
Germantown, WI 53022

HarmonicGuard Passive
HGP, 50HP, 208/3/60, Type 3R

DRN BY: JRN DATE: 11/20/20 108777DG
SCALE: 1/8 APRVD: SIZE: C SHT. 1 OF 1

A

A